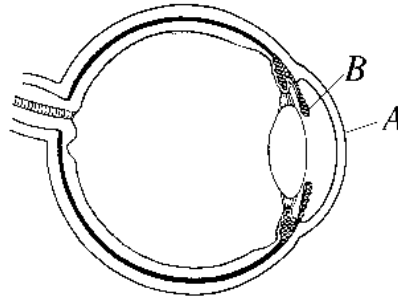


Marks

Question 29 — Communication (25 marks)

- (a) (i) Where are photoreceptor cells located in the eye? **1**
- (ii) State ONE function for each of the structures labelled in the diagram below. **2**



- (b) (i) How would you gather information on the structures used by animals to produce sound? **2**
- (ii) How would you assess that the information you collected was relevant and reliable? **2**

- (c) Describe ways in which technology can be used to overcome the effects of cataracts. **5**

- (d) In your study of Communication, you performed a first-hand investigation to model the process of accommodation. **6**

Justify the procedure used and the conclusions drawn.

- (e) Evaluate the appropriateness of TWO devices designed to assist people with different types of hearing impairment. **7**