

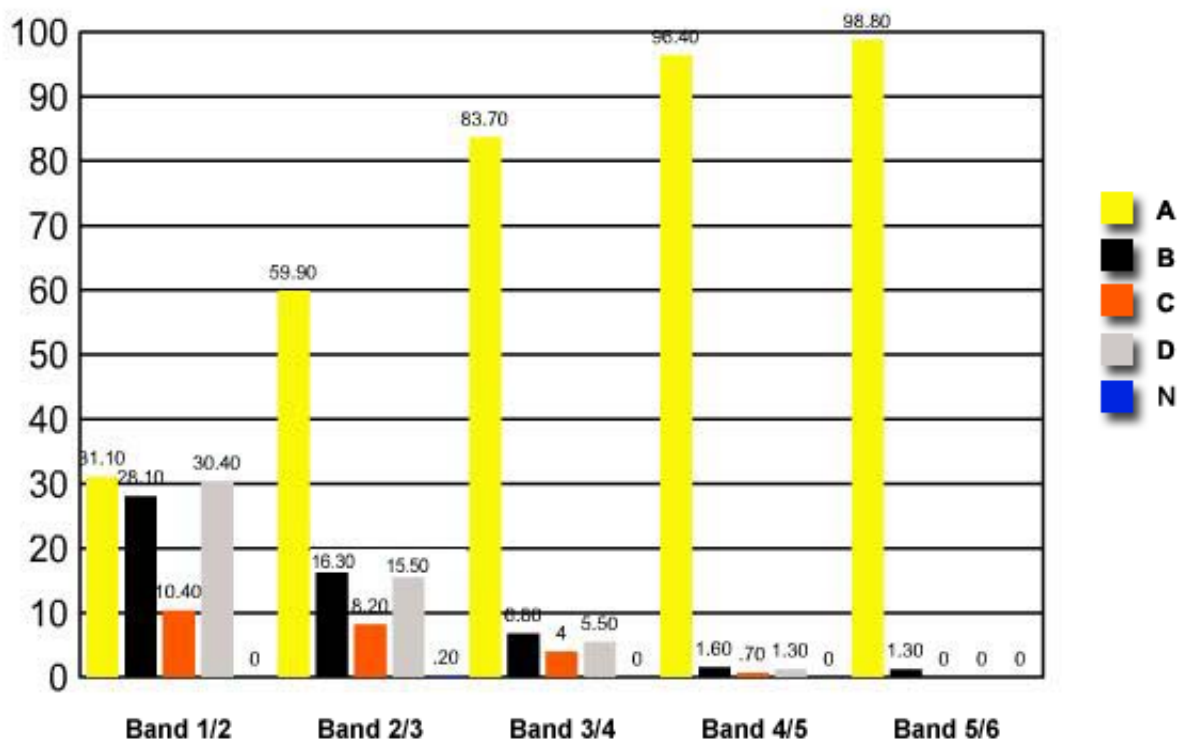
- 1 In a variety of garden peas, the allele for tall plants ( $T$ ) is dominant over the allele for short plants ( $t$ ). A cross between a tall plant and a short plant resulted in 50% of the offspring being short.

What were the genotypes of the parents?

- ✓ (A)  $Tt$  and  $tt$   
 (B)  $Tt$  and  $Tt$   
 (C)  $TT$  and  $Tt$   
 (D)  $TT$  and  $tt$

	Band 1/2	Band 2/3	Band 3/4	Band 4/5	Band 5/6
<b>A</b>	31.10	59.90	83.70	96.40	98.80
<b>B</b>	28.10	16.30	6.80	1.60	1.30
<b>C</b>	10.40	8.20	4	0.70	0
<b>D</b>	30.40	15.50	5.50	1.30	0
<b>N</b>	0	0.20	0	0	0

Question 1 : % answers correct by band range



The table and graph show, for the groups of students whose marks in the examination corresponded to the borderline between two bands, what percentages of each group selected the responses A, B, C and D. N is used to identify: No valid response.