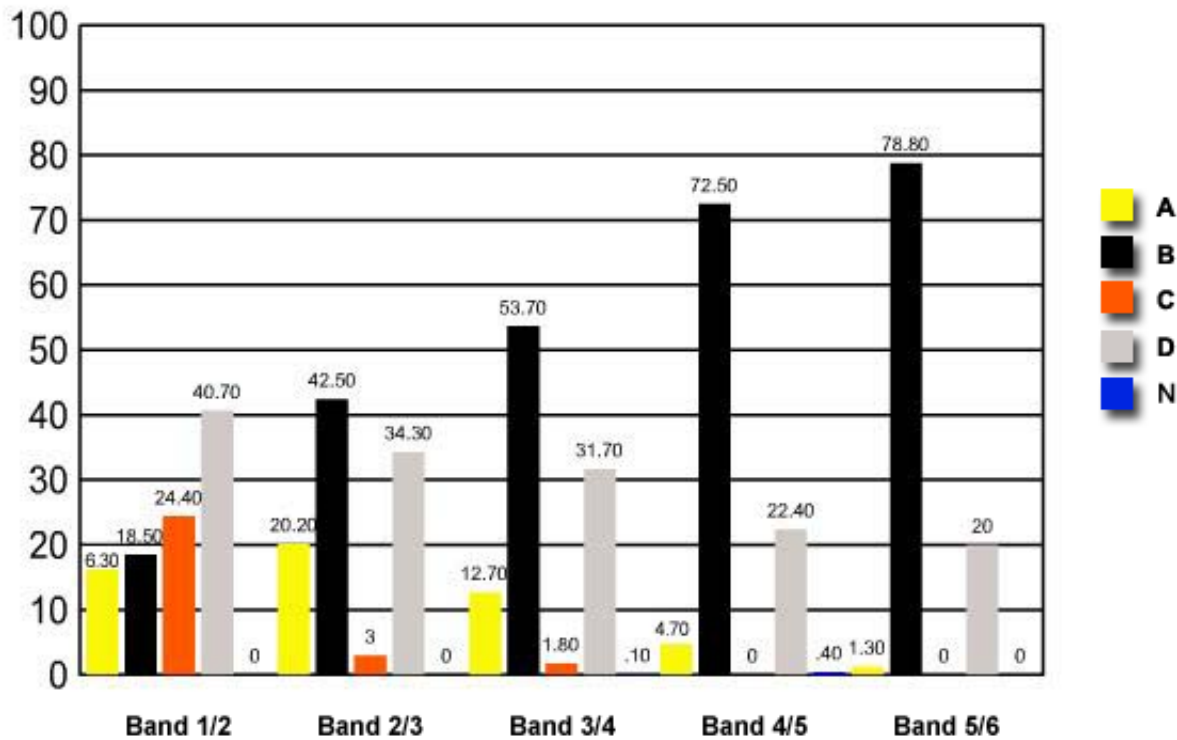


10 During the last 50 years, over-use of prescription drugs has led to the emergence of resistant strains of pathogens. Why is this a problem?

- (A) Resistant pathogens will cause new diseases.
- ✓ (B) Many diseases may become untreatable.
- (C) Prescription drugs will cause the release of toxins by pathogens.
- (D) A single prescription drug can no longer kill all strains of a pathogen.

	Band 1/2	Band 2/3	Band 3/4	Band 4/5	Band 5/6
A	16.30	20.20	12.70	4.70	1.30
B	18.50	42.50	53.70	72.50	78.80
C	24.40	3	1.80	0	0
D	40.70	34.30	31.70	22.40	20
N	0	0	0.10	0.40	0

Question 10 : % answers correct by band range



The table and graph show, for the groups of students whose marks in the examination corresponded to the borderline between two bands, what percentages of each group selected the responses A, B, C and D. N is used to identify: No valid response.