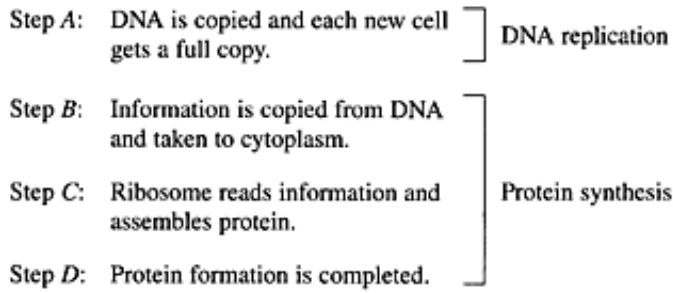


15 The steps involved in DNA replication and protein production are summarised below.



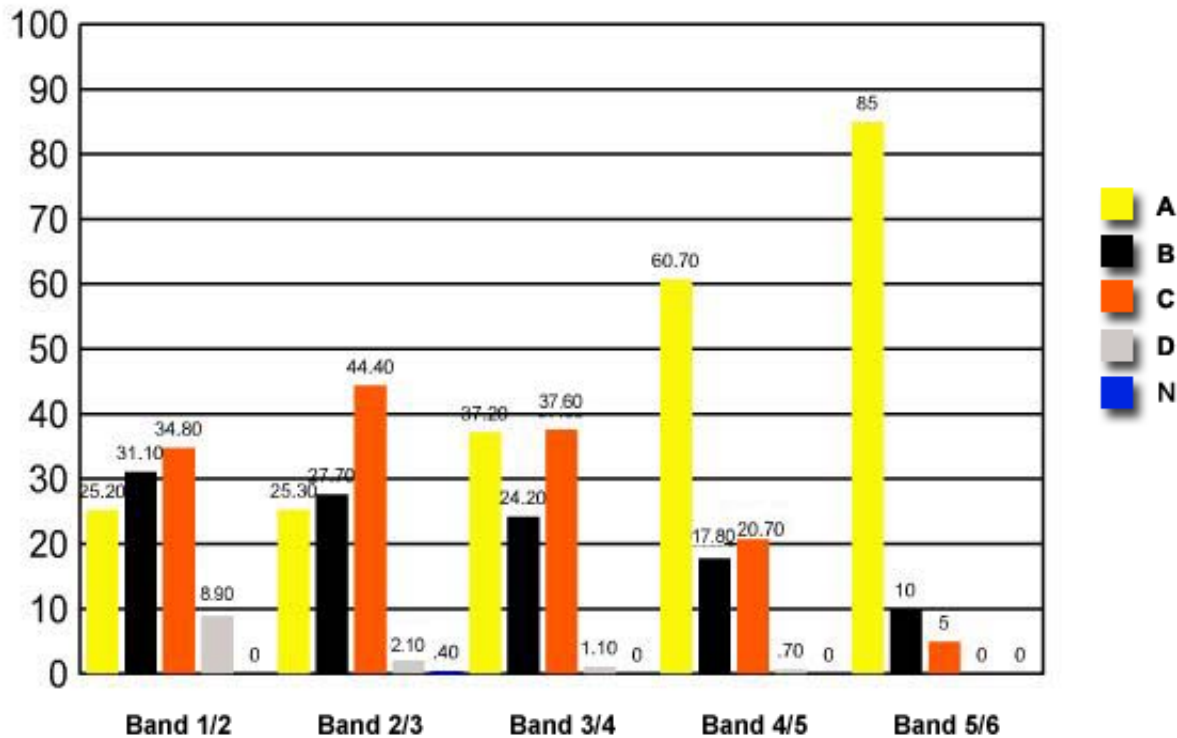
In which step would a mutation lead to the formation of a new allele?

- ✓ (A) Step A
- (B) Step B
- (C) Step C
- (D) Step D

Band 1/2 Band 2/3 Band 3/4 Band 4/5 Band 5/6

	25.20	25.30	37.20	60.70	85
A	25.20	25.30	37.20	60.70	85
B	31.10	27.70	24.20	17.80	10
C	34.80	44.40	37.60	20.70	5
D	8.90	2.10	1.10	0.70	0
N	0	0.40	0	0	0

Question 15 : % answers correct by band range



The table and graph show, for the groups of students whose marks in the examination corresponded to the borderline between two bands, what percentages of each group selected the responses A, B, C and D. N is used to identify: No valid response.