

Marks

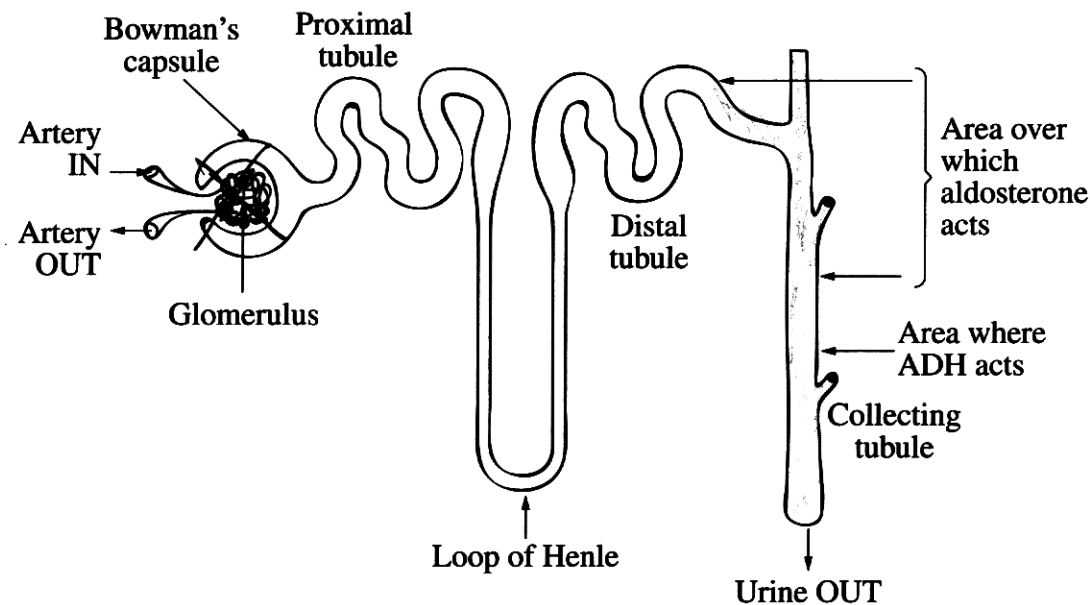
Question 23 (6 marks)

The diagram represents a nephron which is the functional unit of the kidney.

Nephrons make urine by:

- filtering small molecules and ions from the blood;
- reabsorbing the needed amounts of useful materials.

Surplus or waste molecules and ions flow out as urine.



- (a) Identify the area where filtration occurs, by marking it with an X on the diagram. 1
- (b) Identify the area where reabsorption occurs, by shading it on the diagram. 1
- (c) Discuss the importance of hormone replacement therapy for people who cannot secrete aldosterone. 4

renal dialysis

The importance of hormone replacement is important to replace aldosterone because the aldosterone controls the reabsorption of needed amounts of useful materials. The artificial process renal dialysis replaces the ~~hormones~~ hormones using diffusion.