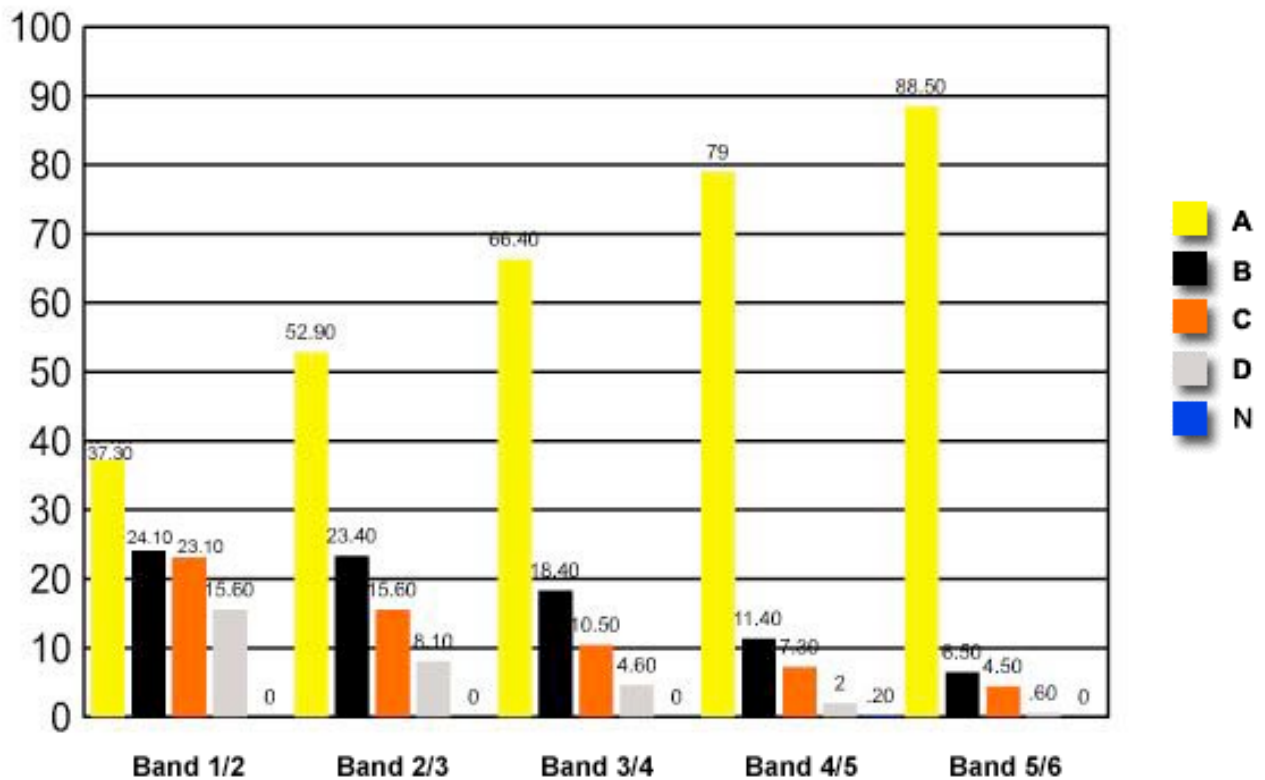


1 Which conditions would be best for the fermentation of sugars by yeast?

- ✓ (A) Low oxygen concentration and a temperature between 25°C and 35°C
- (B) High oxygen concentration and a temperature between 25°C and 35°C
- (C) Low oxygen concentration and a temperature between 45°C and 60°C
- (D) High oxygen concentration and a temperature between 45°C and 60°C

	Band 1/2	Band 2/3	Band 3/4	Band 4/5	Band 5/6
A	37.30	52.90	66.40	79	88.50
B	24.10	23.40	18.40	11.40	6.50
C	23.10	15.60	10.50	7.30	4.50
D	15.60	8.10	4.60	2	0.60
N	0	0	0	0.20	0

Question 1 : % answers correct by band range



The table and graph show, for the groups of students whose marks in the examination corresponded to the borderline between two bands, what percentages of each group selected the responses A, B, C and D. N is used to identify: No valid response.