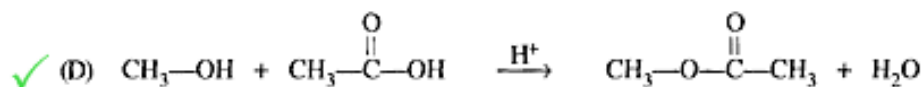
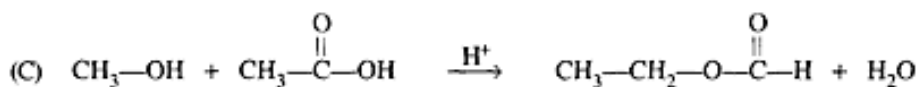
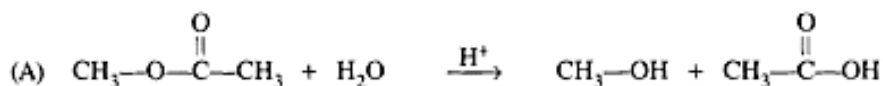
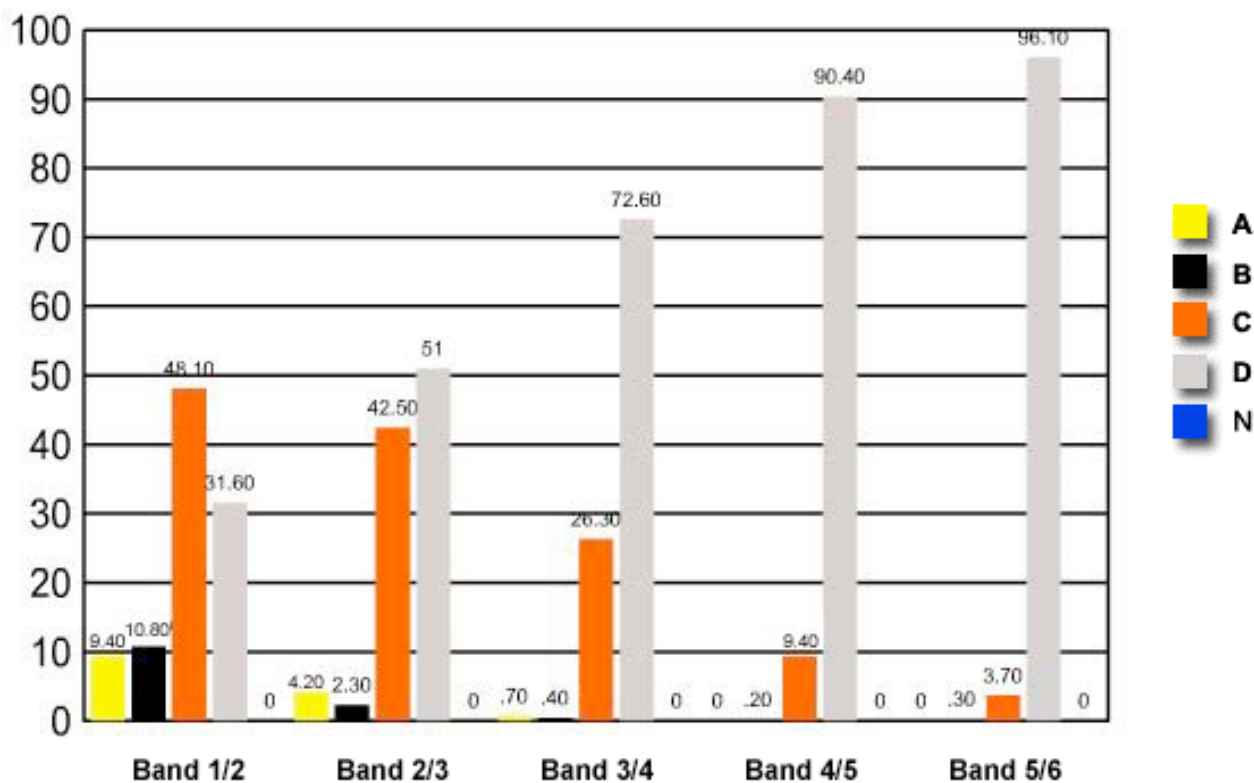


10 Which equation represents esterification?



	Band 1/2	Band 2/3	Band 3/4	Band 4/5	Band 5/6
A	9.40	4.20	0.70	0	0
B	10.80	2.30	0.40	0.20	0.30
C	48.10	42.50	26.30	9.40	3.70
D	31.60	51	72.60	90.40	96.10
N	0	0	0	0	0

Question 10 : % answers correct by band range



The table and graph show, for the groups of students whose marks in the examination corresponded to the borderline between two bands, what percentages of each group

selected the responses A, B, C and D. N is used to identify: No valid response.
