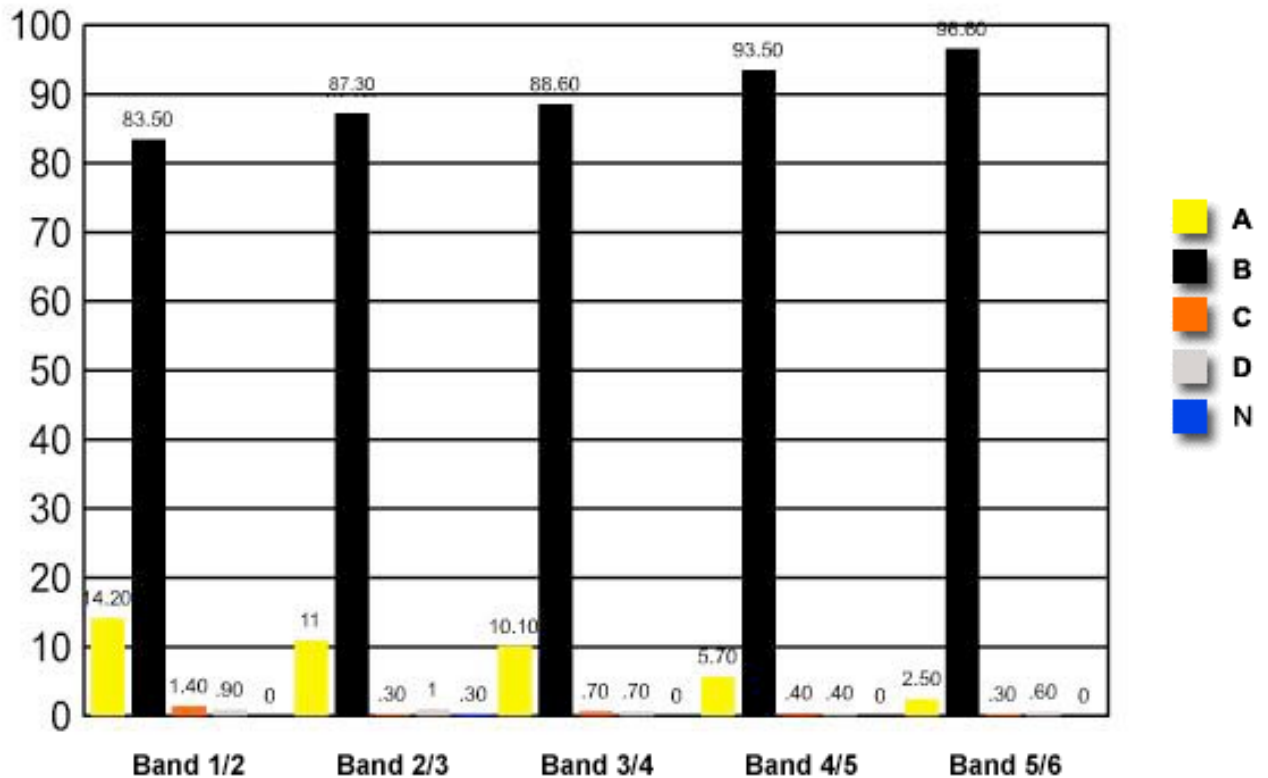


11 A car engine burns fuel with insufficient air. Which substance would be emitted in the exhaust in higher levels than from an engine with a correct fuel to air ratio?

- (A) Carbon dioxide
- ✓ (B) Carbon monoxide
- (C) Oxygen
- (D) Water

	Band 1/2	Band 2/3	Band 3/4	Band 4/5	Band 5/6
A	14.20	11	10.10	5.70	2.50
B	83.50	87.30	88.60	93.50	96.60
C	1.40	0.30	0.70	0.40	0.30
D	0.90	1	0.70	0.40	0.60
N	0	0.30	0	0	0

Question 11 : % answers correct by band range



The table and graph show, for the groups of students whose marks in the examination corresponded to the borderline between two bands, what percentages of each group selected the responses A, B, C and D. N is used to identify: No valid response.