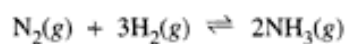
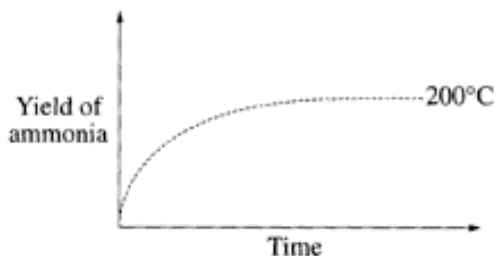


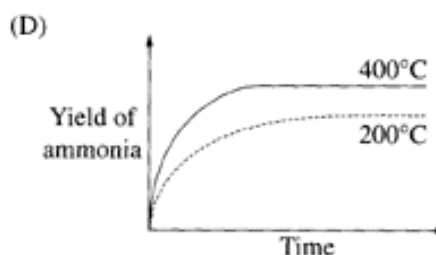
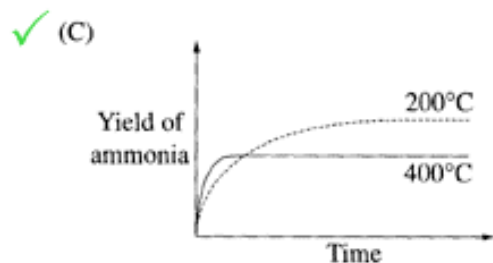
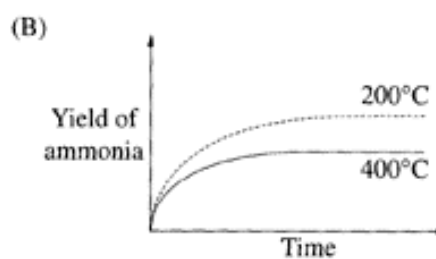
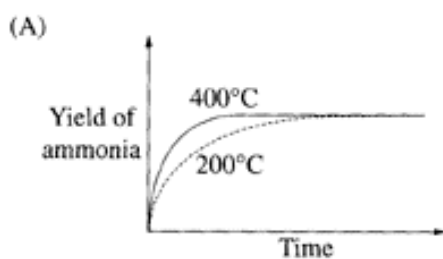
14 Ammonia is produced from hydrogen and nitrogen, according to the equation:



The graph shows the yield of ammonia produced at 200°C and 100 kPa.

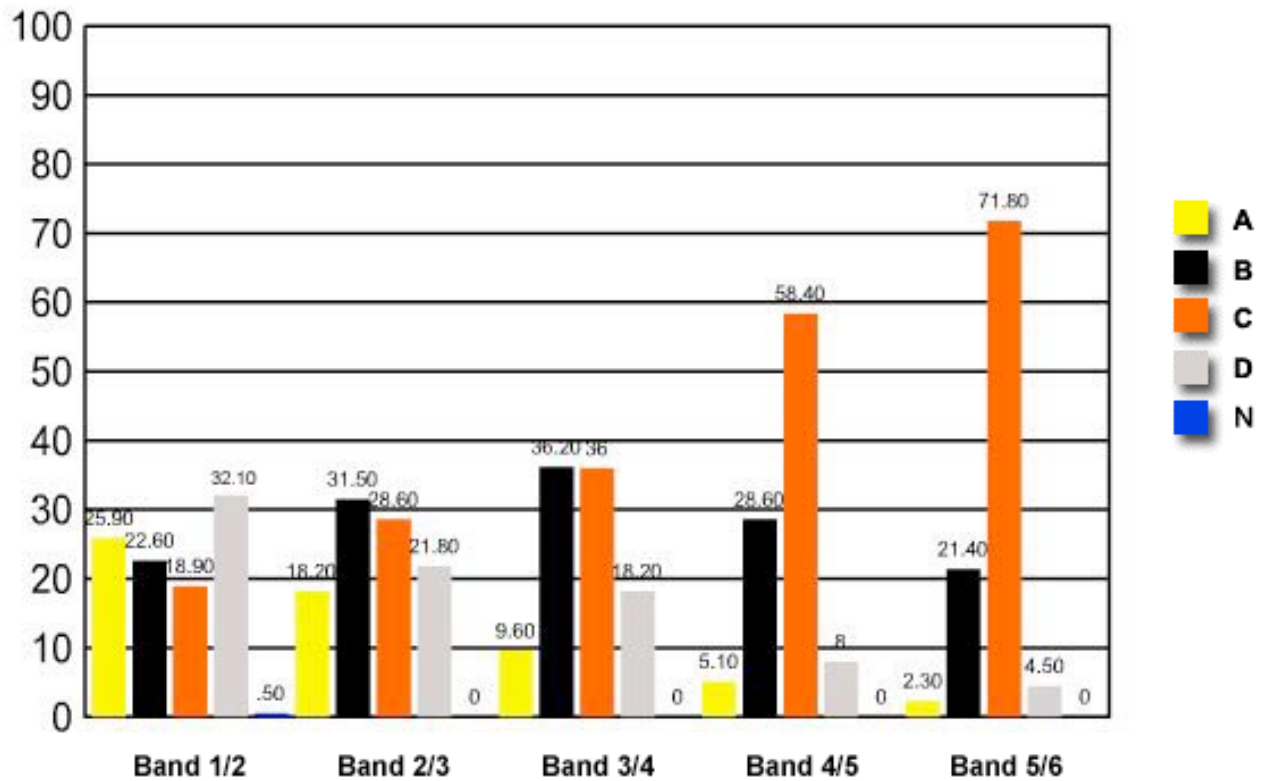


Which graph shows a correct comparison of the yield of ammonia produced at a temperature of 400°C and 100 kPa with the yield produced at 200°C and 100 kPa?



	Band 1/2	Band 2/3	Band 3/4	Band 4/5	Band 5/6
A	25.90	18.20	9.60	5.10	2.30
B	22.60	31.50	36.20	28.60	21.40
C	18.90	28.60	36	58.40	71.80
D	32.10	21.80	18.20	8	4.50
N	0.50	0	0	0	0

## Question 14 : % answers correct by band range



The table and graph show, for the groups of students whose marks in the examination corresponded to the borderline between two bands, what percentages of each group selected the responses A, B, C and D. N is used to identify: No valid response.