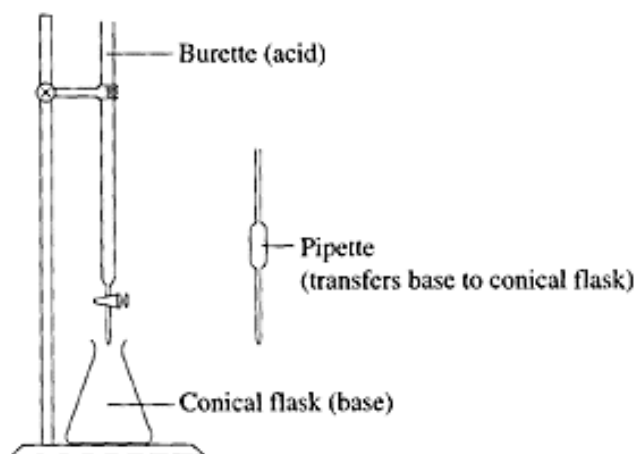


- 8 In a titration, an acid of known concentration is placed in a burette and reacted with a base that has been pipetted into a conical flask.

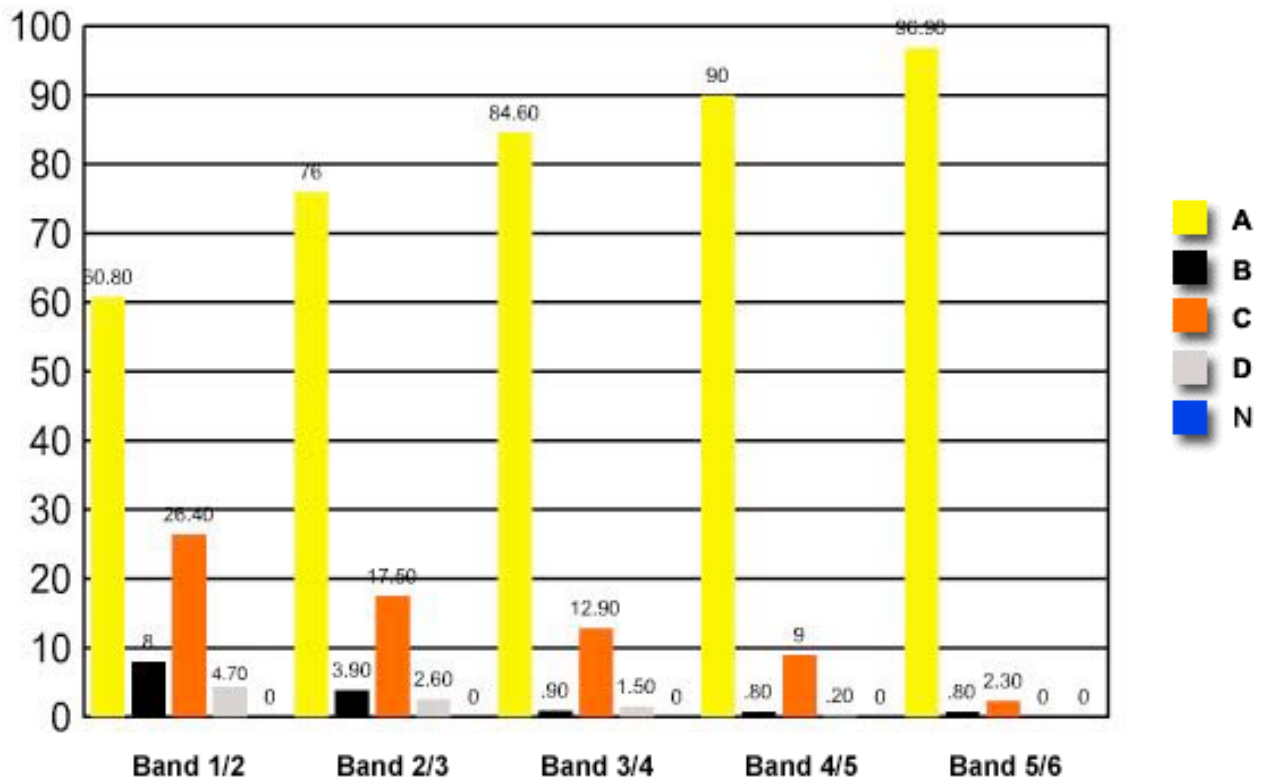


What should each piece of glassware be rinsed with immediately before the titration?

	<i>Burette</i>	<i>Pipette</i>	<i>Conical flask</i>
✓ (A)	acid	base	water
(B)	water	water	water
(C)	acid	base	base
(D)	water	water	base

	Band 1/2	Band 2/3	Band 3/4	Band 4/5	Band 5/6
A	60.80	76	84.60	90	96.90
B	8	3.90	0.90	0.80	0.80
C	26.40	17.50	12.90	9	2.30
D	4.70	2.60	1.50	0.20	0
N	0	0	0	0	0

Question 8 : % answers correct by band range



The table and graph show, for the groups of students whose marks in the examination corresponded to the borderline between two bands, what percentages of each group selected the responses A, B, C and D. N is used to identify: No valid response.