

9 The following list of steps refers to an experimental plan for making an ester in a flask. Some of the steps in the list may NOT be required for this experiment. The steps are NOT in the correct sequence.

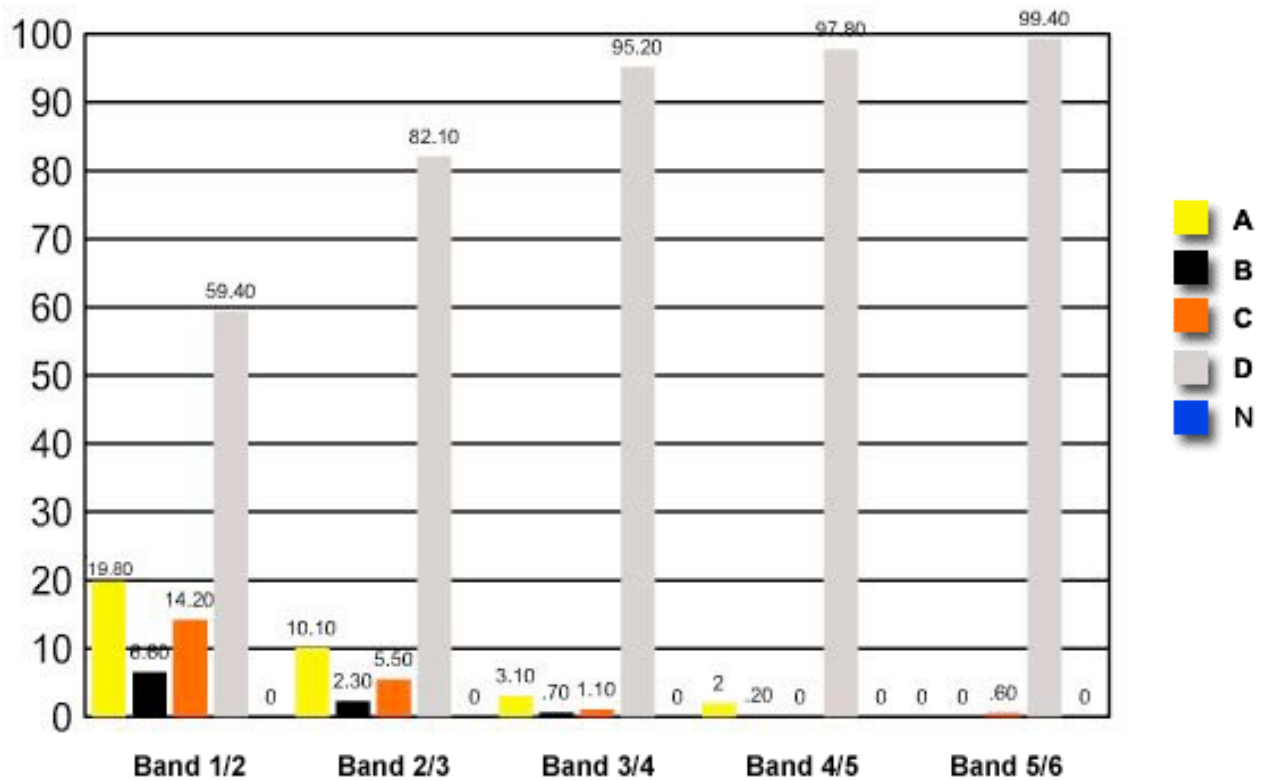
1. Heat the mixture under reflux.
2. Add three drops of concentrated sulfuric acid.
3. Add 1 mL of ethanol.
4. Add 1 mL of ethene.
5. Add 1 mL of ethanoic acid.
6. Distil the mixture.
7. Add three drops of phenolphthalein indicator.

Which alternative is the best sequence for making an ester?

- (A) 3, 5, 7, 1
(B) 4, 3, 7, 6
(C) 5, 4, 2, 6
✓ (D) 5, 3, 2, 1

	Band 1/2	Band 2/3	Band 3/4	Band 4/5	Band 5/6
A	19.80	10.10	3.10	2	0
B	6.60	2.30	0.70	0.20	0
C	14.20	5.50	1.10	0	0.60
D	59.40	82.10	95.20	97.80	99.40
N	0	0	0	0	0

Question 9 : % answers correct by band range



The table and graph show, for the groups of students whose marks in the examination corresponded to the borderline between two bands, what percentages of each group selected the responses A, B, C and D. N is used to identify: No valid response.
