

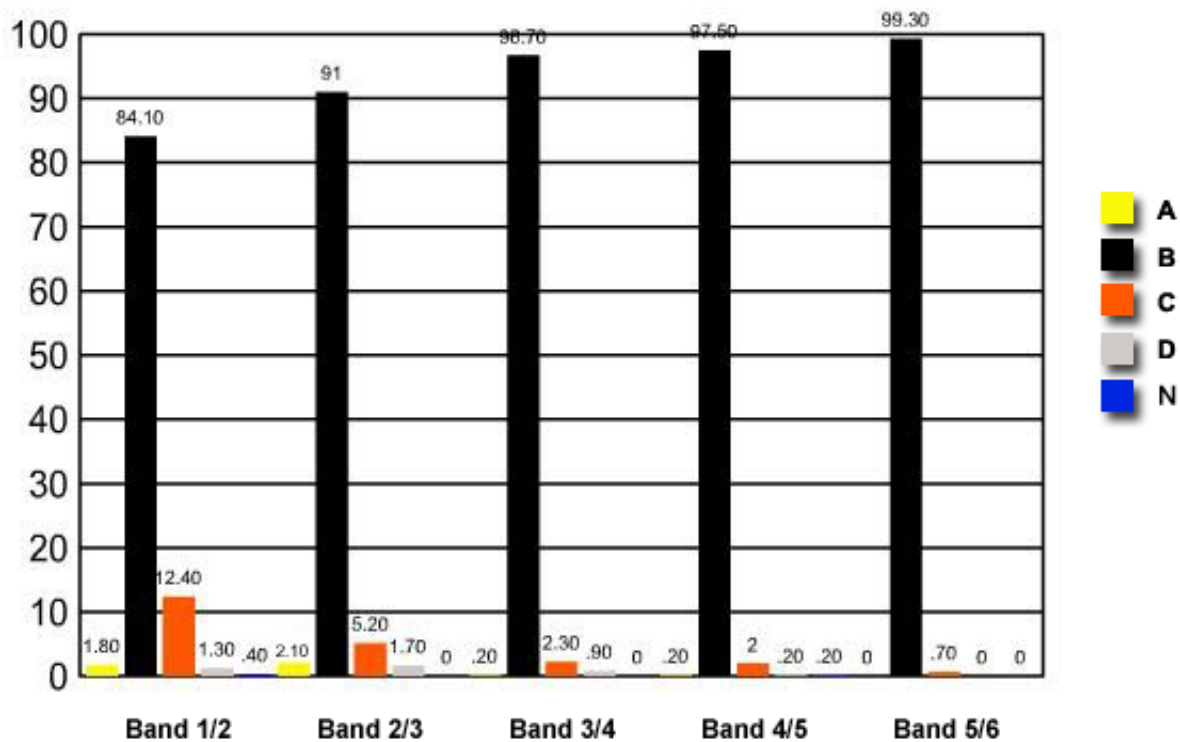
13 What is the reason that a pre-game motivational speech given by a football coach is unlikely to achieve an optimal level of arousal for all players?

- (A) Footballers have little need to prepare psychologically
- ✓ (B) Individuals have different psychological needs
- (C) Players should be able to set their own goals
- (D) Positive reinforcement is not required before a game

**Band 1/2   Band 2/3   Band 3/4   Band 4/5   Band 5/6**

<b>A</b>	1.80	2.10	0.20	0.20	0
<b>B</b>	<b>84.10</b>	<b>91</b>	<b>96.70</b>	<b>97.50</b>	<b>99.30</b>
<b>C</b>	12.40	5.20	2.30	2	0.70
<b>D</b>	1.30	1.70	0.90	0.20	0
<b>N</b>	0.40	0	0	0.20	0

Question 13 : % answers correct by band range



The table and graph show, for the groups of students whose marks in the examination corresponded to the borderline between two bands, what percentages of each group selected the responses A, B, C and D. N is used to identify: No valid response.