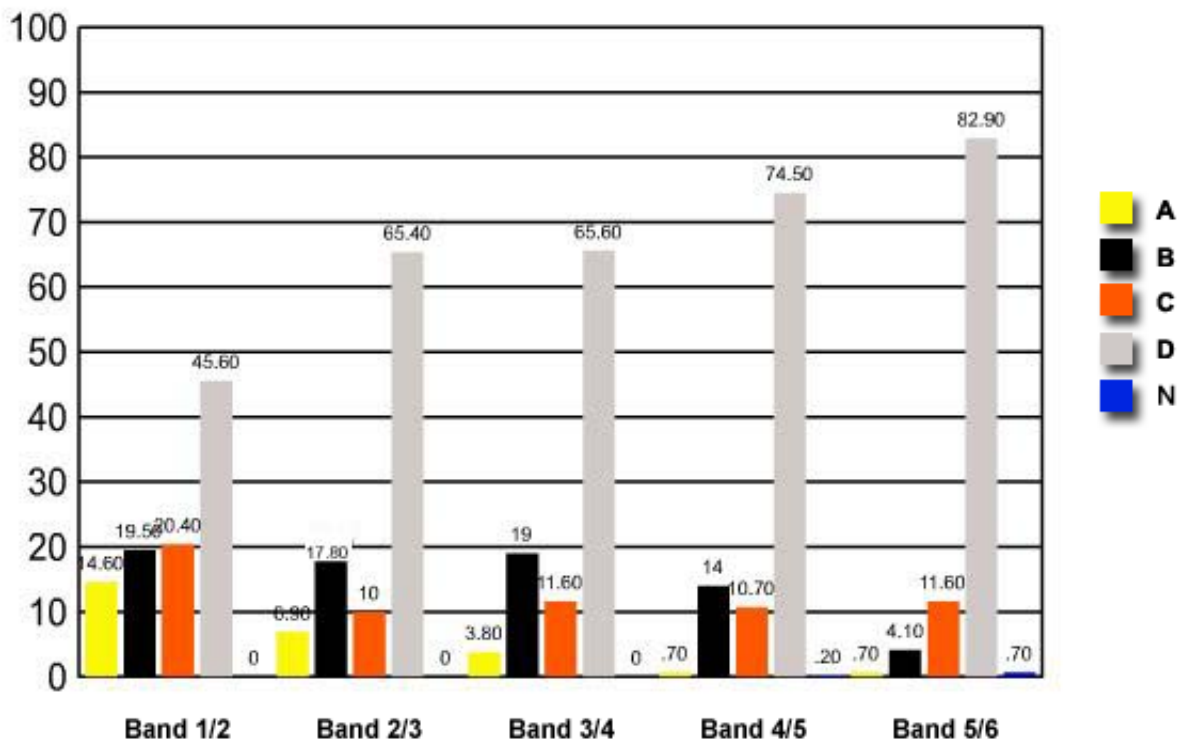


14 What type of appraisal would a panel of judges use to assess an artistic gymnastics routine?

- (A) Check-list
- (B) Objective assessment
- (C) Personal criteria
- ✓ (D) Prescribed criteria

	Band 1/2	Band 2/3	Band 3/4	Band 4/5	Band 5/6
A	14.60	6.90	3.80	0.70	0.70
B	19.50	17.80	19	14	4.10
C	20.40	10	11.60	10.70	11.60
D	45.60	65.40	65.60	74.50	82.90
N	0	0	0	0.20	0.70

Question 14 : % answers correct by band range



The table and graph show, for the groups of students whose marks in the examination corresponded to the borderline between two bands, what percentages of each group selected the responses A, B, C and D. N is used to identify: No valid response.