

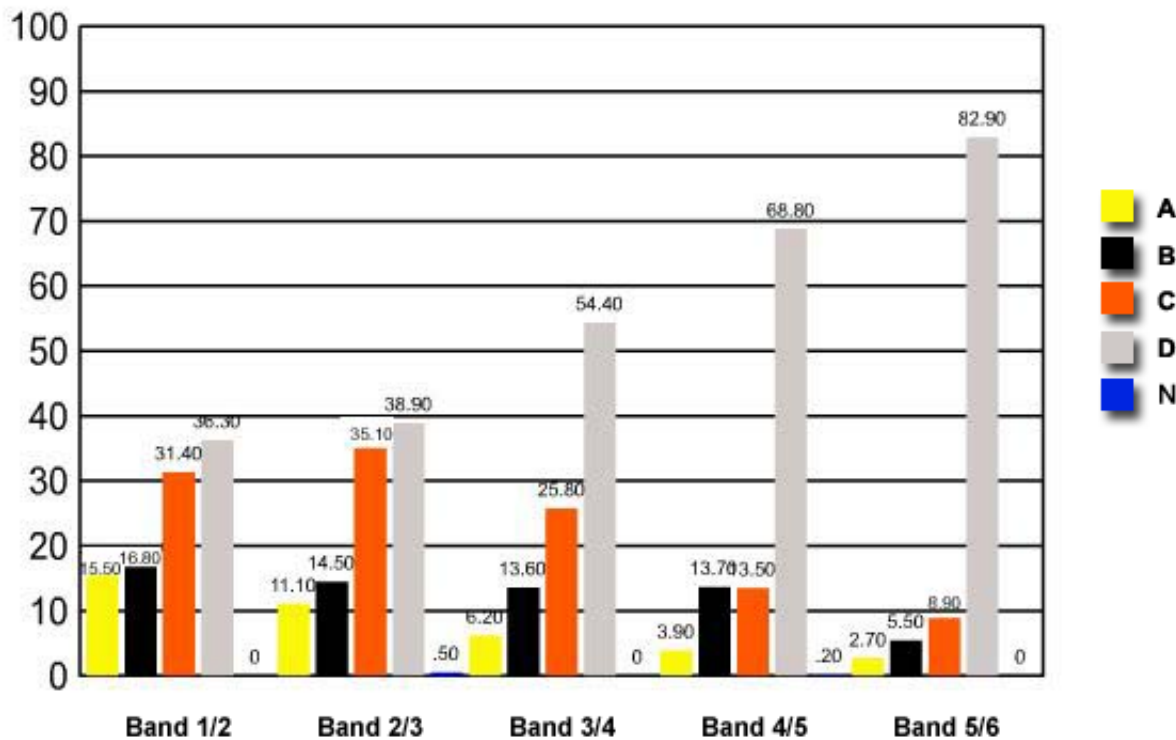
15 What are major characteristics of the associative stage of skill acquisition?

- (A) The performer attends to other aspects of performance, and does not have to think about movement patterns when performing.
- (B) The performer does not have to concentrate on the organisation of patterns of movement, and can correct errors as they occur.
- (C) The performer makes slow improvements, and there is a high level of consistency of performance.
- ✓ (D) The performer understands the sequence of movements, and cognitive problems have been solved.

**Band 1/2 Band 2/3 Band 3/4 Band 4/5 Band 5/6**

<b>A</b>	15.50	11.10	6.20	3.90	2.70
<b>B</b>	16.80	14.50	13.60	13.70	5.50
<b>C</b>	31.40	35.10	25.80	13.50	8.90
<b>D</b>	<b>36.30</b>	<b>38.90</b>	<b>54.40</b>	<b>68.80</b>	<b>82.90</b>
<b>N</b>	0	0.50	0	0.20	0

Question 15 : % answers correct by band range



The table and graph show, for the groups of students whose marks in the examination corresponded to the borderline between two bands, what percentages of each group selected the responses A, B, C and D. N is used to identify: No valid response.