

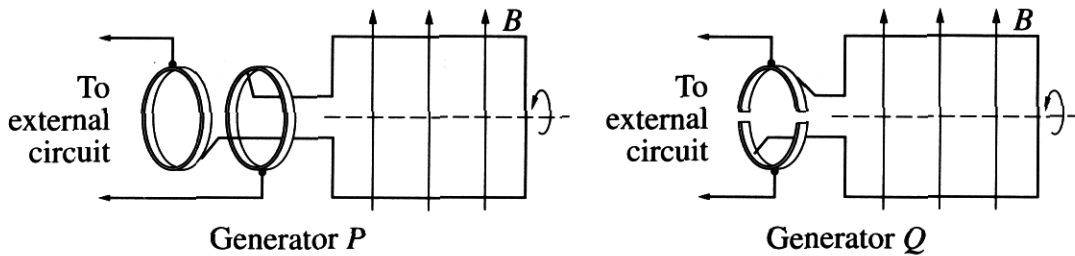
2002 HIGHER SCHOOL CERTIFICATE EXAMINATION  
**Physics**

Section I – Part B (continued)

Marks

**Question 22** (6 marks)

Two types of generator are shown in the diagram.



(a) What is the function of the brush in a generator? 1

..... to convert <sup>electrical current</sup> ~~electricity~~ continuously out to the external circuit. ....

(b) Which of these generators is a DC generator? Justify your choice. 3

..... Generator P is a DC generator. The rings are continuous. This means that the current is not AC current. (does not alter). ....

(c) Outline why AC generators are used in large-scale electrical power production. 2

..... because AC current are easier to produce. you don't need to turn the coil. i simply just alter the magnetic field. the electrical current will be produced. ....