

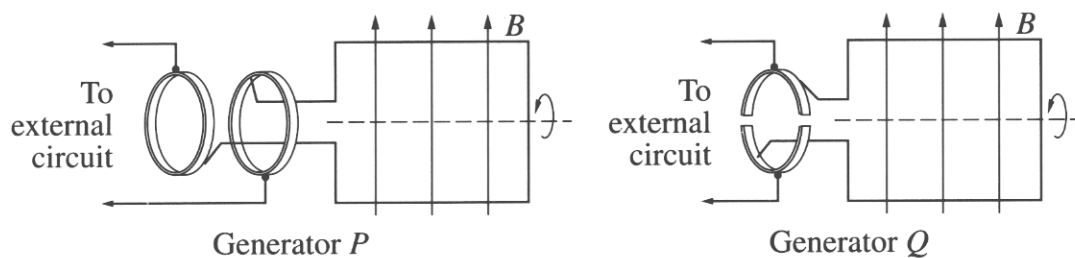
Physics

Section I – Part B (continued)

Marks

Question 22 (6 marks)

Two types of generator are shown in the diagram.



- (a) What is the function of the brush in a generator? 1

*To create ~~magn~~ magnetic field*

- (b) Which of these generators is a DC generator? Justify your choice. 3

*Generator Q is a DC generator because only have one external ~~circ~~ circuit.*

- (c) Outline why AC generators are used in large-scale electrical power production. 2

*Because there are two circles to external circuit, that makes AC generators are ~~more~~ used in large-scale electrical power production.*