

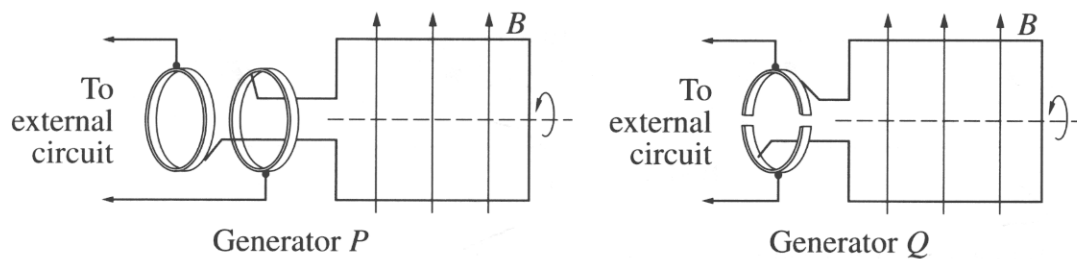
Physics

Section I – Part B (continued)

Marks

Question 22 (6 marks)

Two types of generator are shown in the diagram.



- (a) What is the function of the brush in a generator? 1

The brush keeps the electricity flowing through the circuit to ~~spin the~~ rotate the coil.

- (b) Which of these generators is a DC generator? Justify your choice. 3

Generator Q is a DC generator as it has a split-ring commutator, ~~this is~~ this split-ring commutator keeps the current flowing always in the right direction and also stops the wires from tangling.

- (c) Outline why AC generators are used in large-scale electrical power production. 2

AC generators are used in large-scale power production ~~to~~ because ~~as~~ AC power ~~can~~ travel can be transmitted economically without much losses through heat across long distances.