

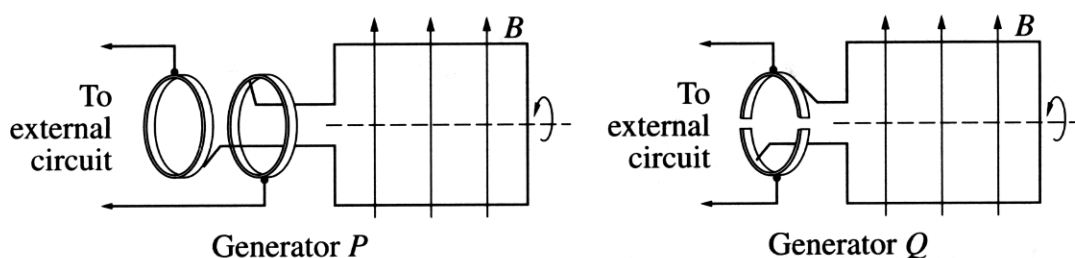
Physics

Section I – Part B (continued)

Marks

Question 22 (6 marks)

Two types of generator are shown in the diagram.



(a) What is the function of the brush in a generator? 1

*The function of the brush in a generator is to induce the current into the coil of wire.*

(b) Which of these generators is a DC generator? Justify your choice. 3

*Generator Q is a DC generator because it has split rings (commutator). AC motors do not have split ring commutators they have slip-rings (as shown in Generator P).*

(c) Outline why AC generators are used in large-scale electrical power production. 2

*A.C. generators have less wear and tear parts, they can produce high voltages with little power loss. They are more adaptable to household appliances, e.g. fridges, ovens e.t.c.*

?