

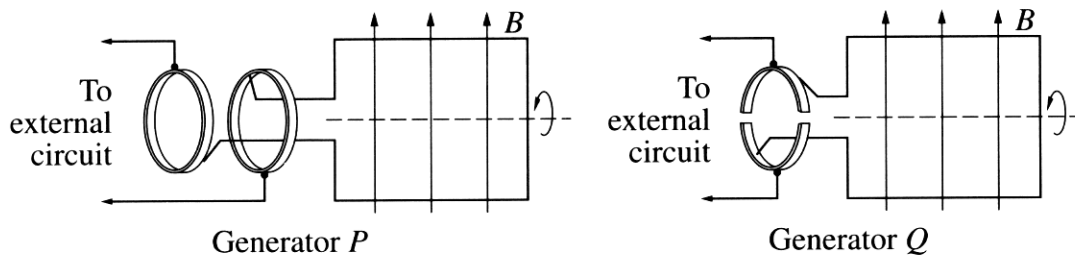
2002 HIGHER SCHOOL CERTIFICATE EXAMINATION  
**Physics**

Section I – Part B (continued)

Marks

**Question 22** (6 marks)

Two types of generator are shown in the diagram.



- (a) What is the function of the brush in a generator? 1  
*(It feeds the current) It picks up the current produced and feeds it to the ammeter to show results. They are made carbon.*
- (b) Which of these generators is a DC generator? Justify your choice. 3  
*Generator Q. Generator Q has a split ring commutator as oppose to generator P, which has a slip ring commutator.*
- (c) Outline why AC generators are used in large-scale electrical power production. 2  
*They are capable of higher power generating and are cheaper to operate.*