

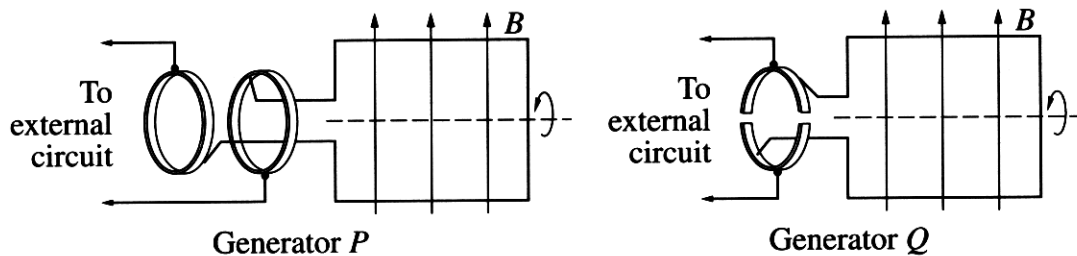
Physics

Section I – Part B (continued)

Marks

Question 22 (6 marks)

Two types of generator are shown in the diagram.



- (a) What is the function of the brush in a generator? 1

brush transmit or carry current out of coil to external circuit.

- (b) Which of these generators is a DC generator? Justify your choice. 3

Generator Q is DC generator as it use split ring to reverse the direction of current in half or revolution to kept the current to external circuit in one direction so it called direct current. Generator Q is DC generator.

- (c) Outline why AC generators are used in large-scale electrical power production. 2

To transmit the power from electrical power production to consumer for easy and reduce energy lost, ^{over long distance} the transformer is use to step up & down the voltage. AC generator produce alternating current ~~can~~ easy to use in transformer.