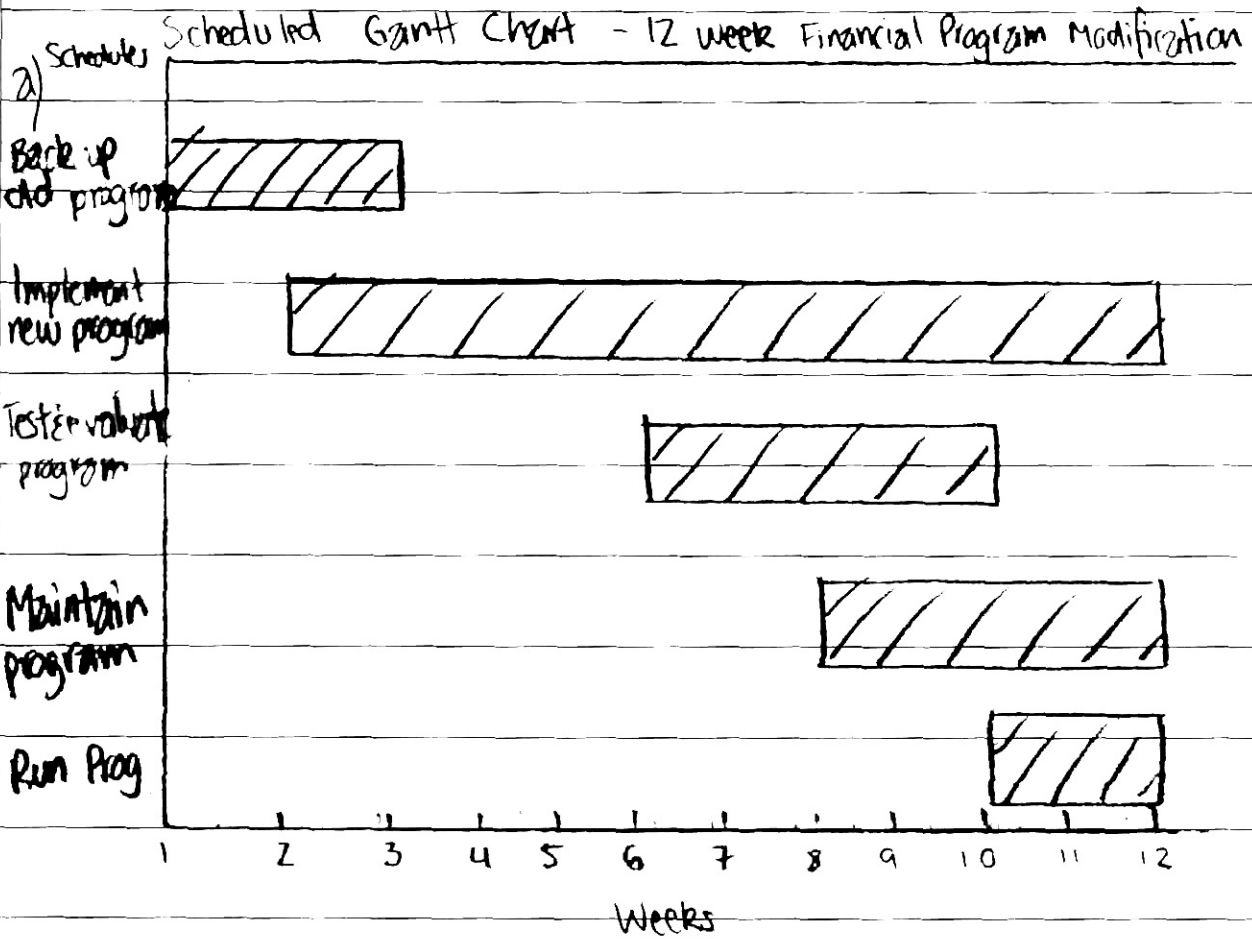
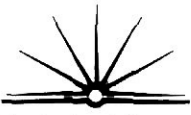


SECTION II - Question (21)



b) Well when creating a new system (program) to replace an old one. The data has to be collected from the old program. eg. data dictionary, test data etc... This is so the new program created can be compatible with the new system.

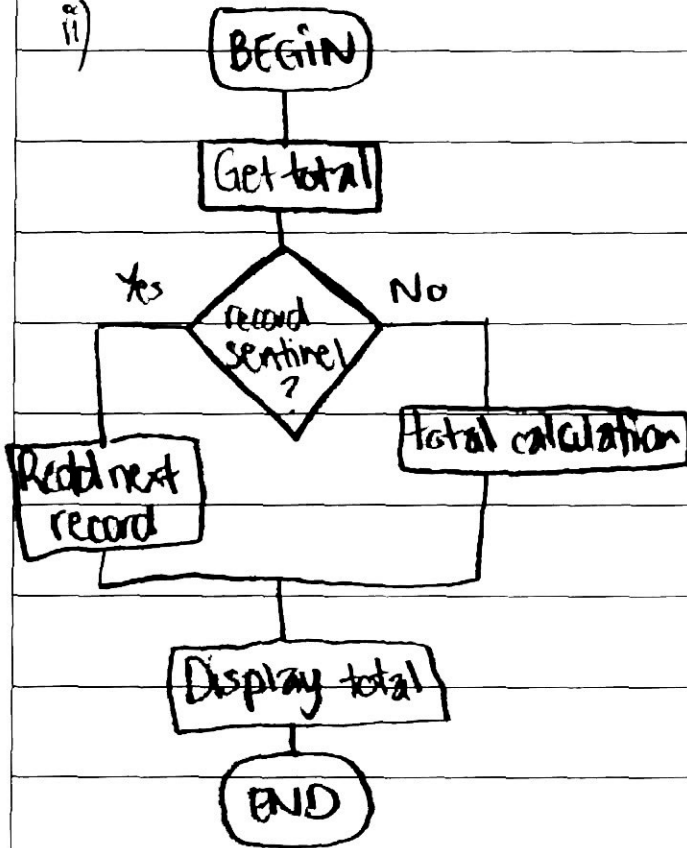
The new system has to be made sure that all the old data from the old can be entered into the new fields from the modified system.



Section II - Question (21)

c) —

ii)



d) This is a ~~good~~ good CASE tool as it shows the versions of the program created and the modifications since created from the beginning.

ii) —