

Textiles and Design

Section II (continued)

Marks

Question 13 — Properties and Performance of Textiles (10 marks)

- (a) Explain how a finishing technique can be used to enhance fabric performance for a specific end-use. 2

finishing a fabric enhances its performance as a fabric for its specified end use for example Tropic Temp given an anti-pilling finish will give the garment a longer life and more attractive look.

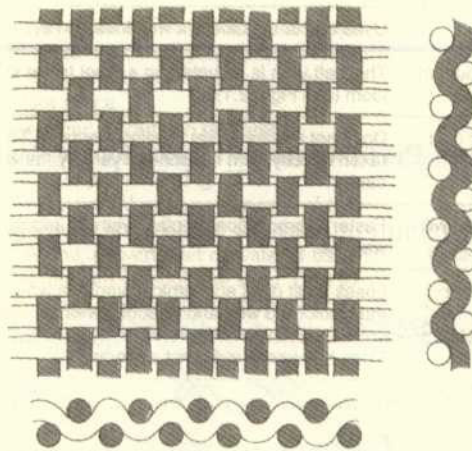
- (b) Explain the impact ONE technological advance in machinery has had on the production of textiles. 2

programming the machinery = this allows designs to be entered into the machine, memory and done automatically

Question 13 continues on page 10

Question 13 (continued)

- (c) Identify the fabric structure in the diagram. Explain why it is an appropriate structure for a cotton hat. 2



plain weave - this is an appropriate structure for a cotton hat as, it doesn't allow stretch as cotton doesn't stretch. also this structure will help give the hat more shape and body and it will keep the fabric firmer in tact.

- (d) (i) Identify a specific end-use that requires excellent abrasion resistance in a fabric. 1

~~laborer's~~ laborer's work pants (labourer)

- (ii) Describe how the fabric structure, yarn structure and fibre content optimise abrasion resistance. 3

a twill weave is very strong and so will resist abrasion much more than a satin weave. a fabric with cotton as it is strong

End of Question 13