

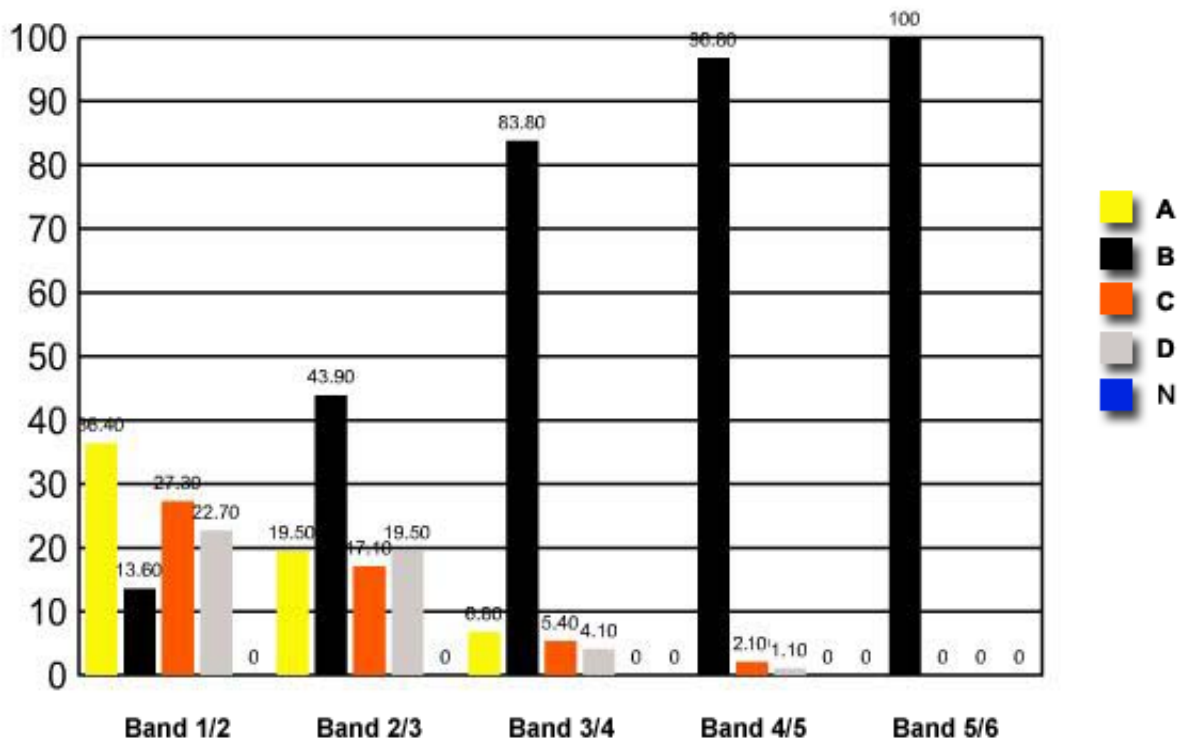
1 Tariff reduction may determine the success or failure of contemporary designers.

Tariff reduction is an example of which of the following factors?

- (A) Expertise
- ✓ (B) Political
- (C) Social
- (D) Technological

	<i>Band 1/2</i>	<i>Band 2/3</i>	<i>Band 3/4</i>	<i>Band 4/5</i>	<i>Band 5/6</i>
A	36.40	19.50	6.80	0	0
B	13.60	43.90	83.80	96.80	100
C	27.30	17.10	5.40	2.10	0
D	22.70	19.50	4.10	1.10	0
N	0	0	0	0	0

Question 1 : % answers correct by band range



The table and graph show, for the groups of students whose marks in the examination corresponded to the borderline between two bands, what percentages of each group selected the responses A, B, C and D. N is used to identify: No valid response.