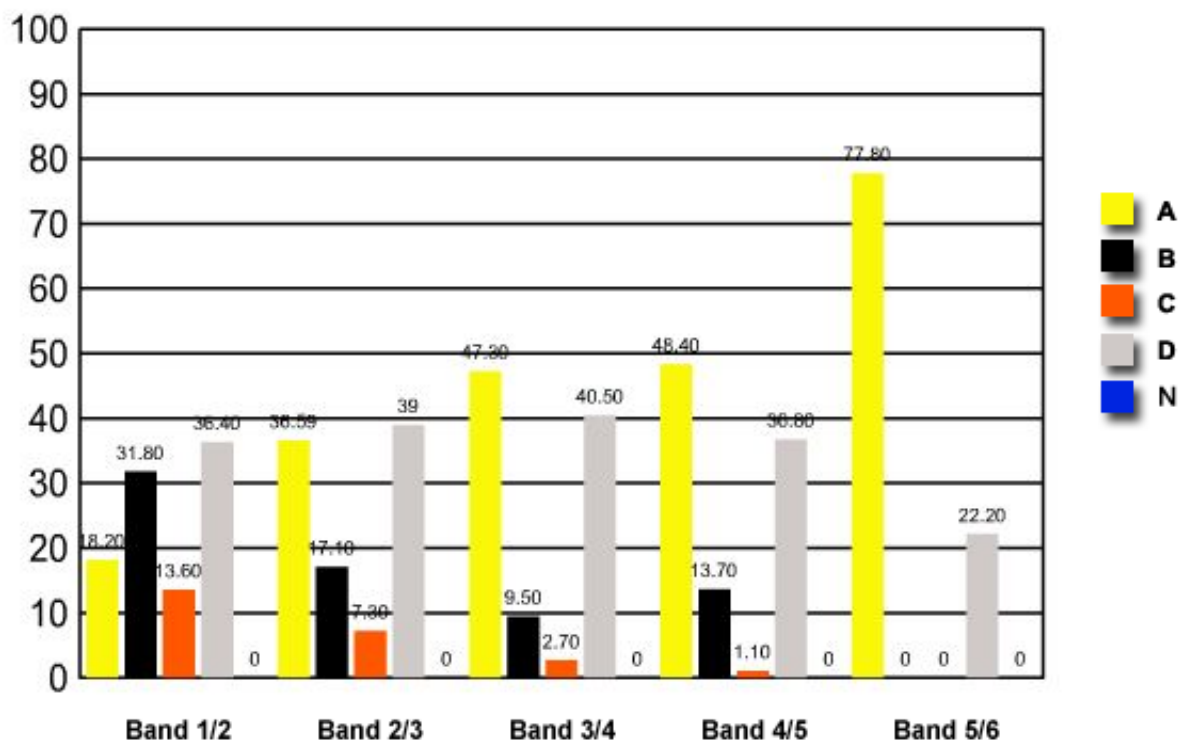


2 Which of the following fabrics would be the most appropriate choice for a beach towel?

- ✓ (A) Cotton fibre, soft spun yarn, pile weave fabric
- (B) Cotton fibre, filament yarn, twill weave fabric
- (C) Viscose rayon fibre, soft spun yarn, plain weave fabric
- (D) Polyester/cotton blend, filament yarn, pile weave fabric

	<b>Band 1/2</b>	<b>Band 2/3</b>	<b>Band 3/4</b>	<b>Band 4/5</b>	<b>Band 5/6</b>
<b>A</b>	<b>18.20</b>	<b>36.60</b>	<b>47.30</b>	<b>48.40</b>	<b>77.80</b>
<b>B</b>	31.80	17.10	9.50	13.70	0
<b>C</b>	13.60	7.30	2.70	1.10	0
<b>D</b>	36.40	39	40.50	36.80	22.20
<b>N</b>	0	0	0	0	0

Question 2 : % answers correct by band range



The table and graph show, for the groups of students whose marks in the examination corresponded to the borderline between two bands, what percentages of each group selected the responses A, B, C and D. N is used to identify: No valid response.