

7 Innovations such as computer aided design and computer aided manufacturing can provide several advantages.

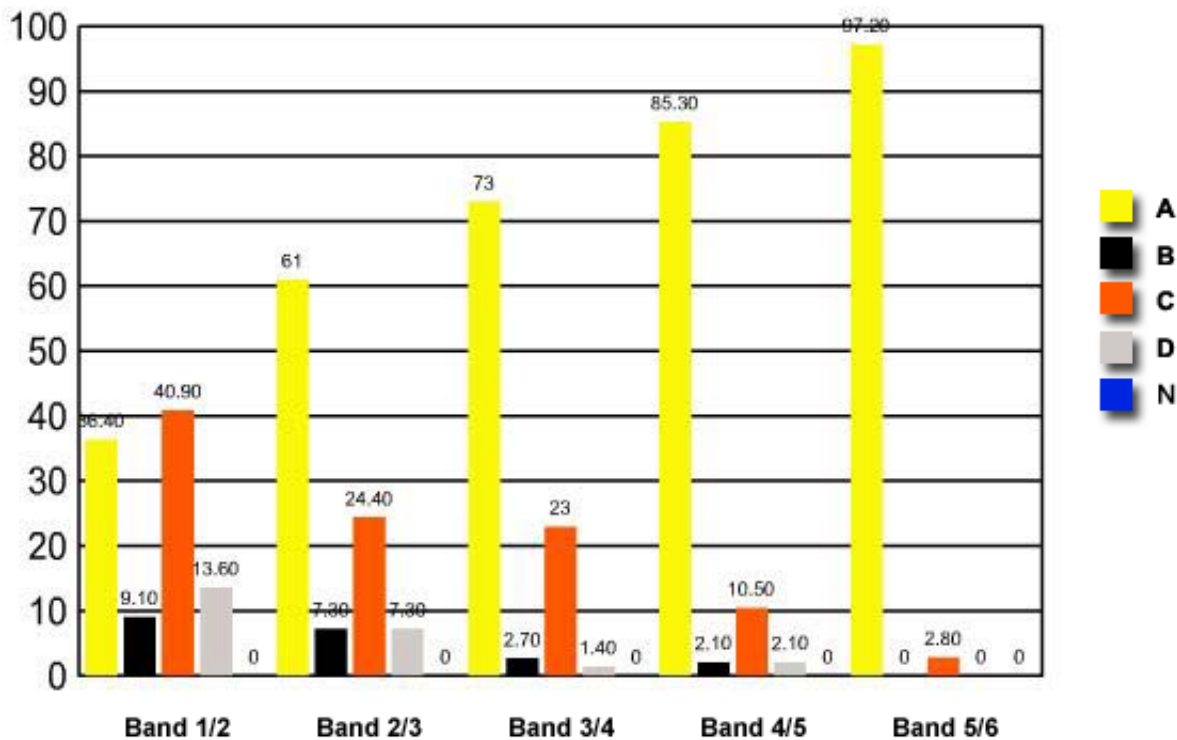
Which of the following would be advantages for the manufacturer?

- ✓ (A) Increased productivity, reduction in staff levels, consistent quality
- (B) Consistent quality, financial outlay for machinery, reduction in staff levels
- (C) Financial outlay for machinery, increased productivity, consistent quality
- (D) Increased productivity, industrial relations issues, reduction in staff levels

**Band 1/2   Band 2/3   Band 3/4   Band 4/5   Band 5/6**

<b>A</b>	<b>36.40</b>	<b>61</b>	<b>73</b>	<b>85.30</b>	<b>97.20</b>
<b>B</b>	9.10	7.30	2.70	2.10	0
<b>C</b>	40.90	24.40	23	10.50	2.80
<b>D</b>	13.60	7.30	1.40	2.10	0
<b>N</b>	0	0	0	0	0

### Question 7 : % answers correct by band range



The table and graph show, for the groups of students whose marks in the examination corresponded to the borderline between two bands, what percentages of each group selected the responses A, B, C and D. N is used to identify: No valid response.