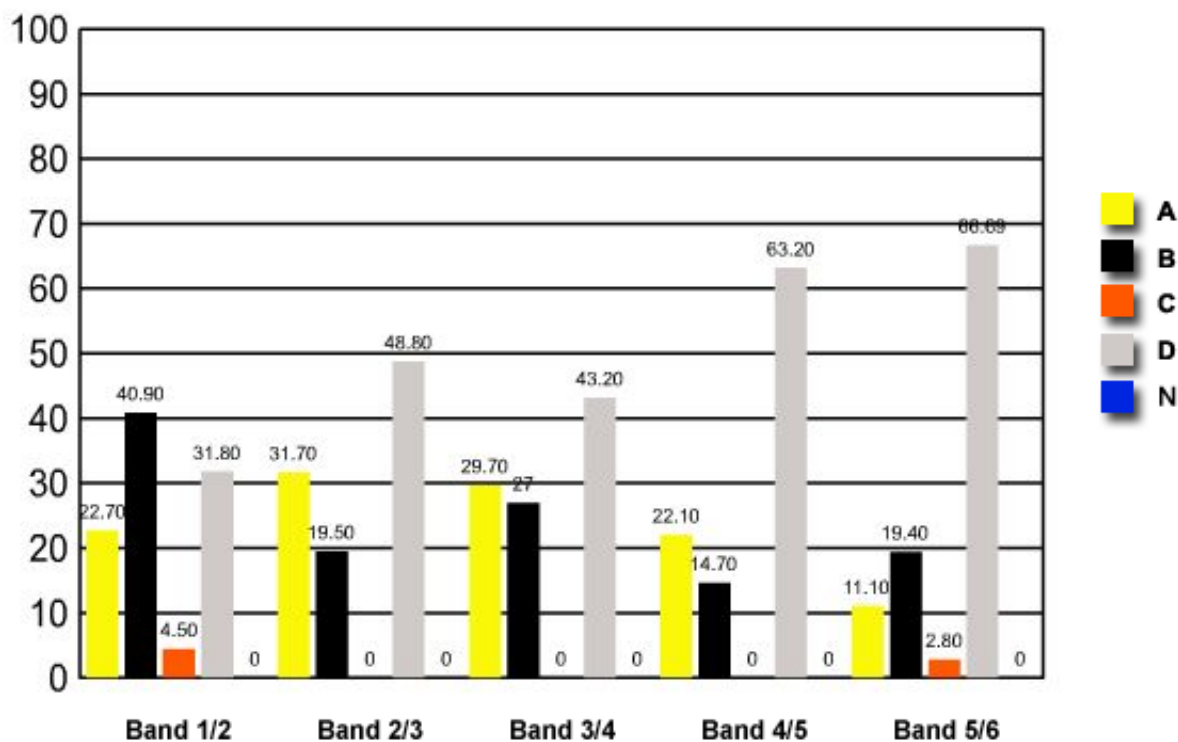


9 What are bicomponent yarns?

- (A) Two different yarns plied together
- (B) Yarns consisting of two different natural fibres
- (C) Yarns consisting of fibres of two different colours
- ✓ (D) Yarns consisting of fibres made from two polymers extruded simultaneously

	<b>Band 1/2</b>	<b>Band 2/3</b>	<b>Band 3/4</b>	<b>Band 4/5</b>	<b>Band 5/6</b>
<b>A</b>	22.70	31.70	29.70	22.10	11.10
<b>B</b>	40.90	19.50	27	14.70	19.40
<b>C</b>	4.50	0	0	0	2.80
<b>D</b>	31.80	48.80	43.20	63.20	66.70
<b>N</b>	0	0	0	0	0

Question 9 : % answers correct by band range



The table and graph show, for the groups of students whose marks in the examination corresponded to the borderline between two bands, what percentages of each group selected the responses A, B, C and D. N is used to identify: No valid response.