

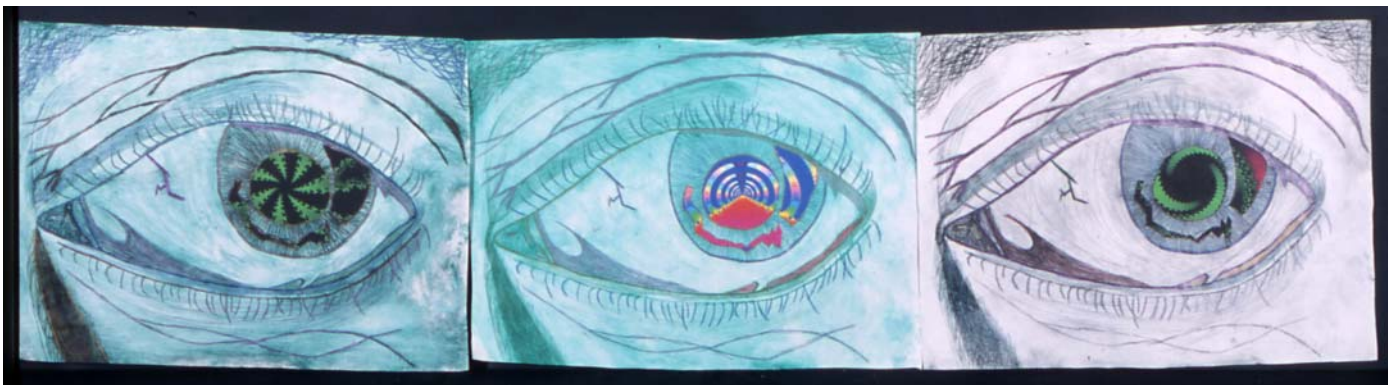
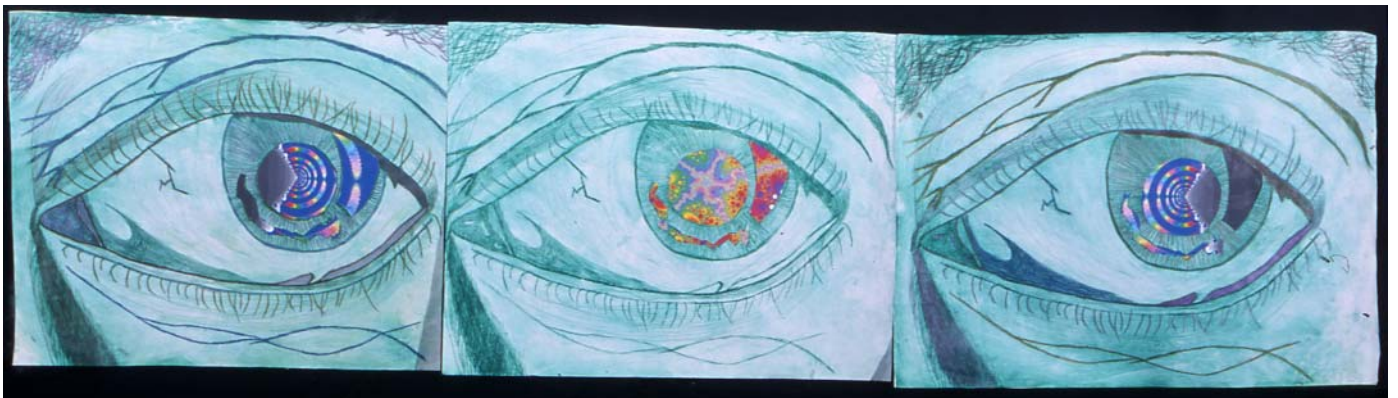
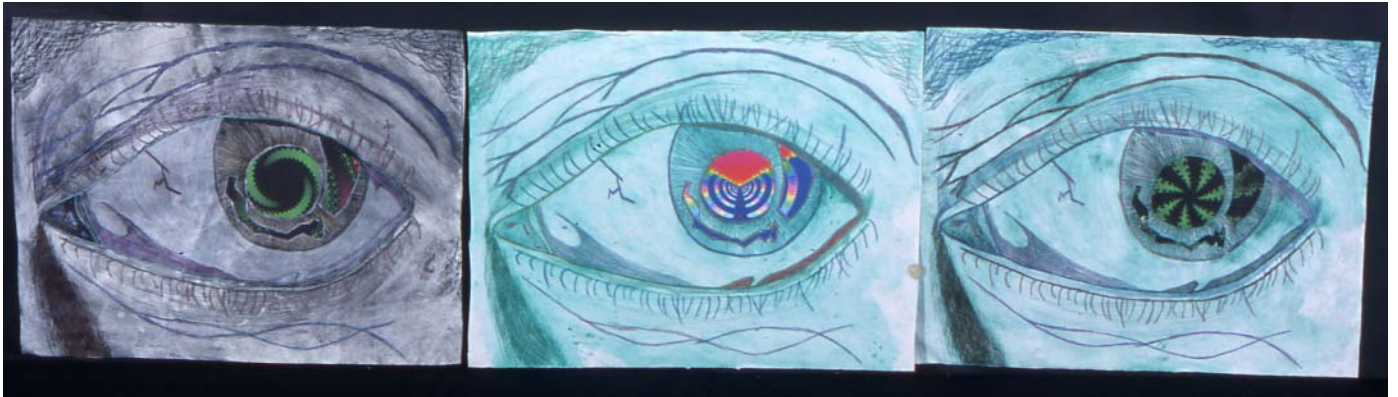
BODY OF WORK

PRINTMAKING

BAND 1/2

TITLE:

ESCAPISM THROUGH TECHNOLOGY



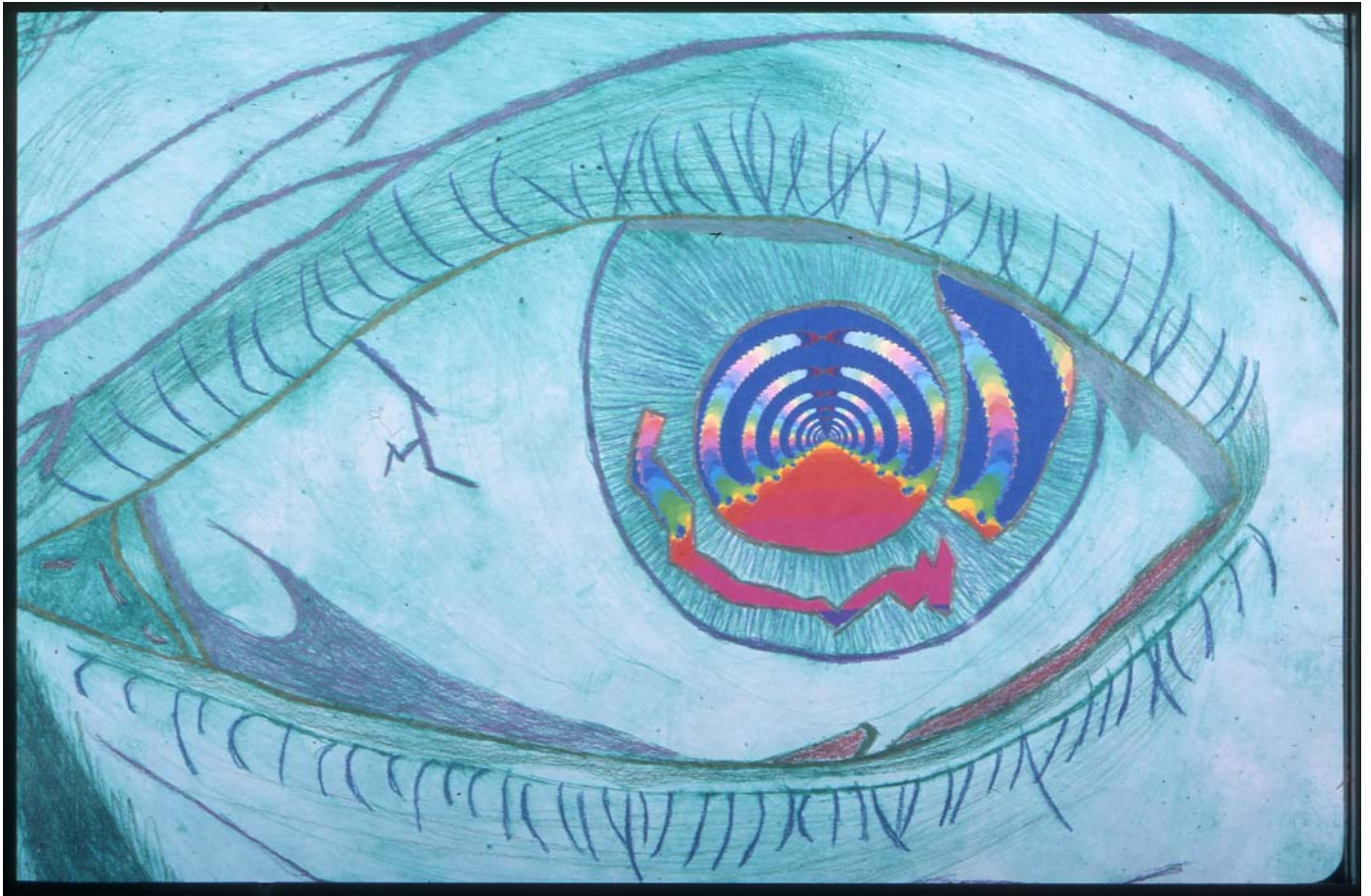
BODY OF WORK

PRINTMAKING

BAND 1/2

TITLE:

ESCAPISM THROUGH TECHNOLOGY



DETAIL

BODY OF WORK

PRINTMAKING

BAND 1/2

TITLE:

ESCAPISM THROUGH TECHNOLOGY

NO. OF WORKS: 9

SIZE: nine – 380 x 500mm

ON WHAT TERMS SHOULD WE CONSIDER THE BODY OF WORK?

WHAT IS THE STUDENT TRYING TO DO?

WHAT IS THE EFFECT OF THE BODY OF WORK ON US?

The student has printed one dry point image of an enlarged eye 9 times in monochromatic colours ranging from black through to green. Computer generated images have been used as collage to further enhance the pupils of the eye in each print. Hand colouring with crayons and pencils is also evident.

The student attempts to draw the audience into various worlds and/or hypnotic states via the patterns generated by a computer.

EXPLANATION

IN WHAT WAYS ARE CONCEPTUAL AND MATERIAL PRACTICE REPRESENTED?

Part of the pupil has been cut away to reveal computer generated images that are reminiscent of psychedelic patterns, creating a sense of unease. These patterns and symbols represent the illusion of a vortex or tunnel enhancing the concept of escapism.

Tonal passages are evident within the drypoint images in an attempt to create form. These also coincide with the directional marks cut into the surface of the plate.

JUDGEMENT

HOW DOES THE STUDENT'S CONCEPTUAL AND MATERIAL PRACTICE COMPARE TO THE DESCRIPTIVE STATEMENTS IN THE MARKING GUIDELINES?

The subject of escapism is investigated but does not communicate on levels beyond the obvious. The series demonstrates some discernment in the selection of colour computer generated images but registers on a simplistic and unrefined level.

Repetition has been used merely as a structural device adding little to the concept.

Limited skills in draughtsmanship and rudimentary mark making reveal a limited understanding of the potential with this printmaking form.