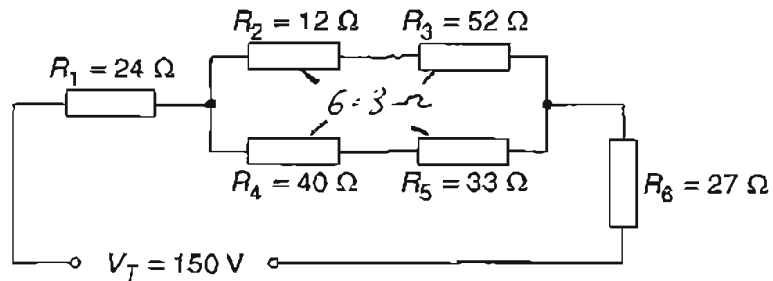


**Question 24** (3 marks)

Calculate the total resistance of the electrical circuit shown. Show all your working in the space provided.

3



$$R_T = \frac{1}{12} + \frac{1}{52} + \frac{1}{40} + \frac{1}{33} = 6.3 \Omega$$

$$R_T = 24 \Omega + 6.3 \Omega + 27 \Omega$$

$$R_T = 57.3 \Omega$$