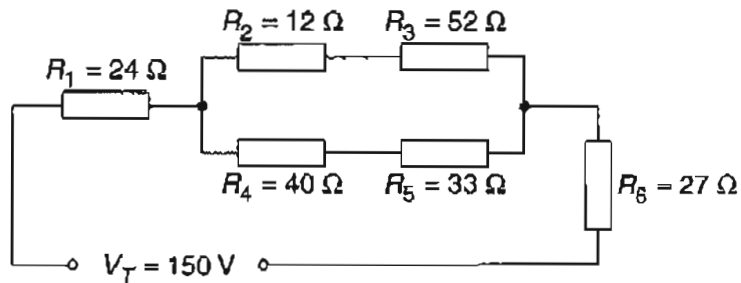


**Question 24 (3 marks)**

Calculate the total resistance of the electrical circuit shown. Show all your working in the space provided.

3



$$R_2/R_3 = 12 + 52 = 64 \Omega$$

$$R_4/R_5 = 40 + 33 = 73 \Omega$$

$$\frac{1}{64} + \frac{1}{73} = \frac{1}{34}$$

$$\text{Total Resistance} = 24 + 34 + 27 = 85 \Omega$$

